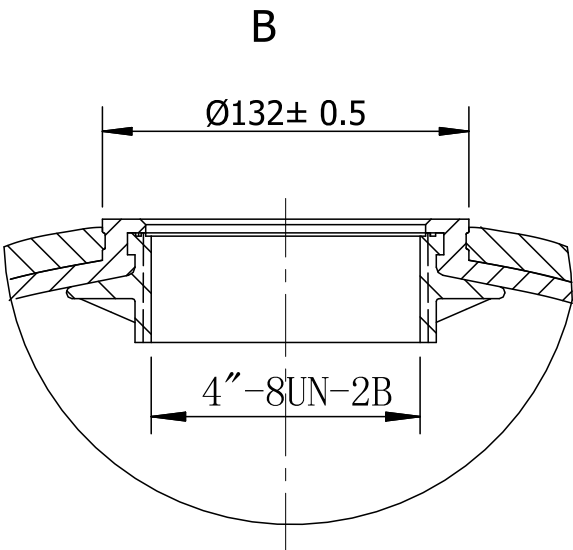
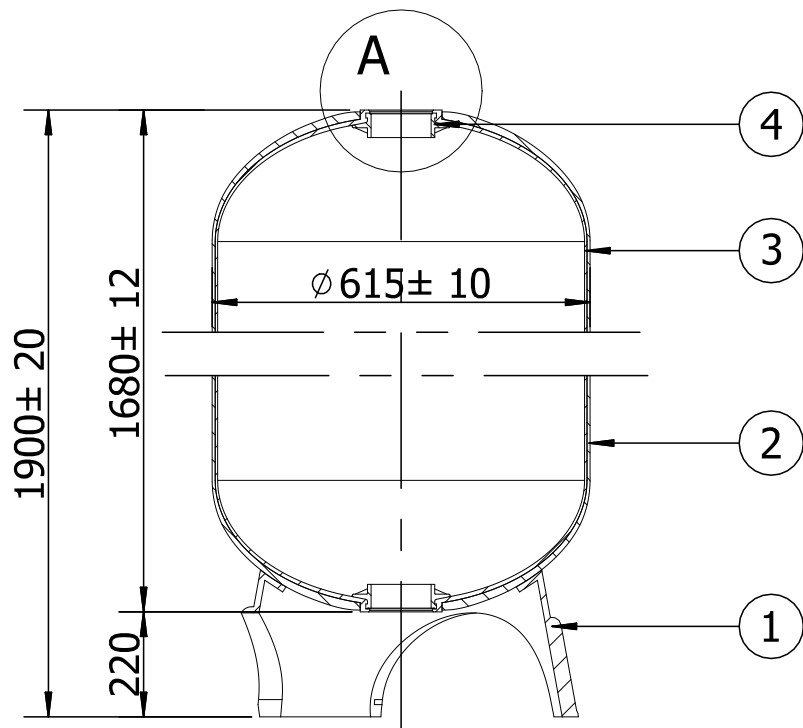
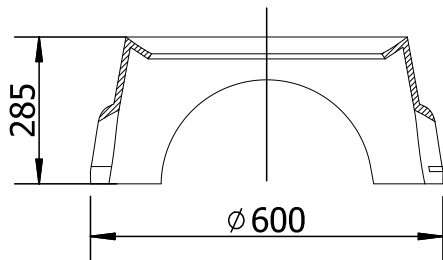
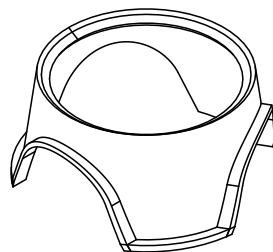


Model	Height	Vol	Weight
2472-4T4B	1900 mm	427L	



- NOTES:
1. Inner shell - Polyethylene (PE) seamless one-piece tank liner
 2. Outer shell - Continuous strands of fiber-glass with high strength epoxy resin
 3. Bottom base - FRP reinforced tripod base
 4. Opening - 4 inch thread opening
 5. Tanks meet all applicable specification of NSF/ANSI 044 standard
 6. Operating Specifications:
 - Maximum Working Pressure : 150 PSI (1.0MPa)
 - Temperature :1-49 C (34-120 F)
 - Maximum Vacuum:127mm Hg(5"Hg)
 7. Liner inspection
 - No more than 20 internal 、 external blemishes、 burnt debris
 - No internal 、 external blemishes、 burnt debris larger than 5 *5 mm
 8. Surface finish
 9. Surface to be free of resin, glass,nicks,barbed filament
 10. Tank to be bonded to base
 11. The base to be level correction
 12. Top and bottom opening to be parallel,top opening to be parallel with the base



4	4"-8UN	2	PPO	
3	Linner	1	PE	
2	OuterShell	1	FRP	
1	Base	1	SMC	
NO.	NAME	COUNT	MATERIAL	REMARK

Subsidiary Column

						CANATURE HUAYU ENVIRONMENTAL PRODUCTS CO.,LTD		
标记	数量	单位	更改文件号	签名	日期	阶段标记	重量(Kg)	比例
设计			标准化					
审核	检测人	检测日期						
						2472-4T4B		

本图尺寸均以mm计，图中尺寸请勿量取。