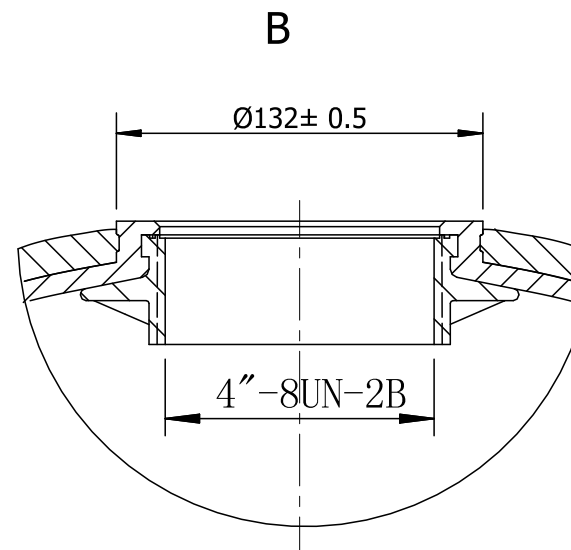
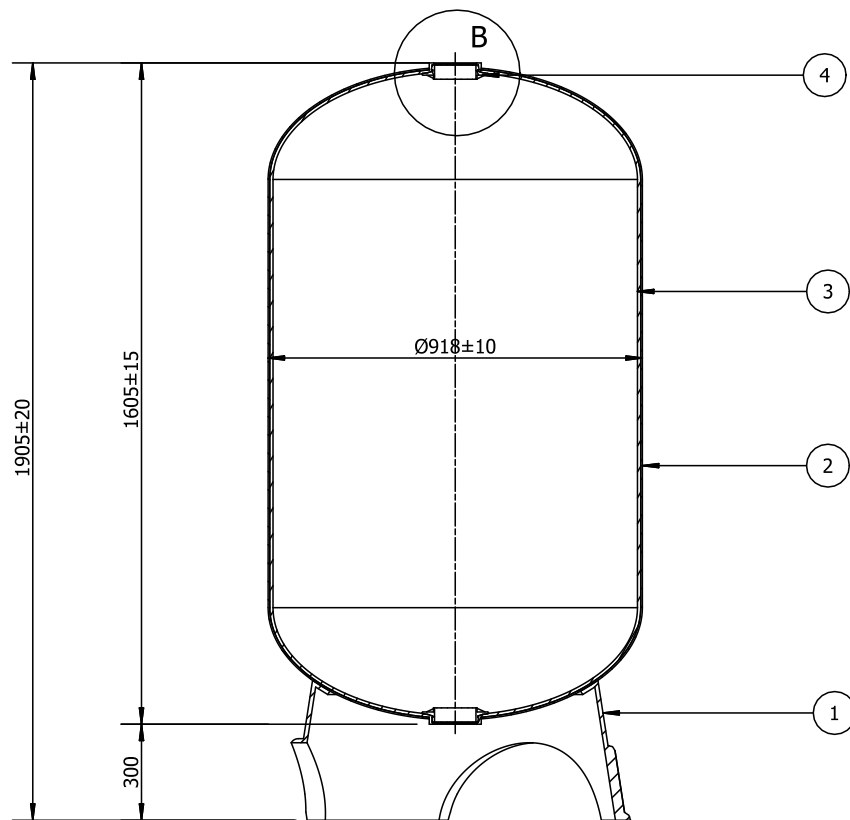
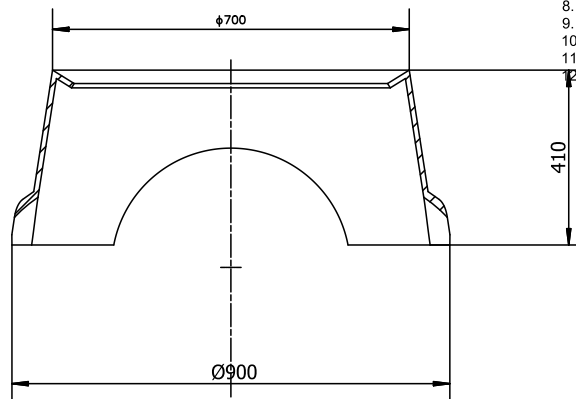
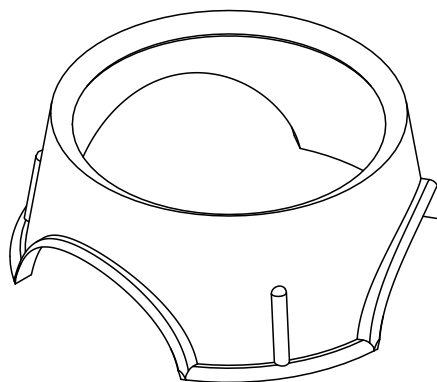


Model	Height	Vol	Weight
3672-4T4B	1905 mm	850L	



- NOTES:
1. Inner shell - Polyethylene (PE) seamless one-piece tank liner
 2. Outer shell - Continuous strands of fiber-glass with high strength epoxy resin
 3. Bottom base - FRP reinforced tripod base
 4. Opening - 4 inch thread opening
 5. Tanks meet all applicable specification of NSF/ANSI 044 standard
 6. Operating Specifications:
 - Maximum Working Pressure : 150 PSI (1.0MPa)
 - Temperature :1-49 C (34-120 F)
 - Maximum Vacuum:127mm Hg(5\"H
 7. Liner inspection
 - No more than 20 internal 、 external blemishes、 burnt debris
 - No internal 、 external blemishes、 burnt debris larger than 5 *5 mm
 8. Surface finish
 9. Surface to be free of resin, glass,nicks,barbed filament
 10. Tank to be bonded to base
 11. The base to be level correction
 12. Top and bottom opening to be parallel,top opening to be parallel with the base



4	4"-8UN	2	PPO	
3	Linner	1	PE	
2	OuterShell	1	FRP	
1	Base	1	SMC	
NO.	NAME	COUNT	MATERIAL	REMARK

Subsidiary Column

						CANATURE HUAYU ENVIRONMENTAL PRODUCTS CO.,LTD		
设计			标准			阶段	重量(Kg)	比例
审核	校对人	标准日期						
						3672-4T4B		